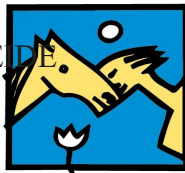


EREDMÉNY ÖSSZESÍTŐ

PONY RIDERS Team Competition Test

M A G Y A R



Lovas: Tímea SZABÓ
Ló: COMTESSE VAN DE BEEKERHEDE
Klub: HUN

FÓT CDI***, CDI-W, CDIY, CDIJ, CDIP
FÓT , 2022-09-30

| | E | H | C | M | B | szorzó |
|----------------------|------------|------------|------------|------------|----------------|--------|
| 1 | 6.5 | 7.0 | 6.5 | 6.0 | 7.0 | |
| 2 | 7.0 | 7.0 | 6.5 | 6.5 | 7.5 | |
| 3 | 7.0 | 7.0 | 6.5 | 6.5 | 7.5 | |
| 4 | 7.0 | 6.5 | 6.0 | 6.5 | 7.0 | |
| 5 | 6.5 | 6.0 | 6.0 | 6.0 | 7.5 | 2 |
| 6 | 7.0 | 6.0 | 6.5 | 6.0 | 7.0 | |
| 7 | 7.0 | 7.0 | 6.5 | 6.0 | 7.0 | |
| 8 | 6.5 | 6.0 | 6.0 | 6.0 | 7.0 | |
| 9 | 7.0 | 7.0 | 6.5 | 7.0 | 7.0 | |
| 10 | 6.5 | 7.0 | 6.0 | 4.0 | 6.5 | 2 |
| 11 | 6.5 | 6.5 | 7.0 | 6.5 | 6.5 | |
| 12 | 6.5 | 7.0 | 6.5 | 6.5 | 7.0 | |
| 13 | 7.0 | 7.0 | 6.5 | 6.5 | 7.5 | |
| 14 | 7.0 | 6.0 | 6.0 | 5.0 | 7.0 | 2 |
| 15 | 7.0 | 6.5 | 6.5 | 6.0 | 7.0 | |
| 16 | 7.0 | 6.5 | 6.5 | 6.0 | 7.0 | |
| 17 | 6.5 | 8.0 | 6.0 | 7.0 | 7.0 | |
| 18 | 6.5 | 7.0 | 5.5 | 6.0 | 6.5 | |
| 19 | 6.5 | 7.0 | 6.0 | 6.0 | 6.5 | |
| 20 | 7.0 | 7.0 | 6.5 | 6.5 | 6.5 | |
| 21 | 7.0 | 7.0 | 7.0 | 7.0 | 7.5 | |
| 22 | 7.0 | 6.5 | 6.5 | 7.0 | 7.0 | |
| 23 | 6.5 | 5.0 | 4.0 | 6.0 | 7.0 | |
| 24 | 6.0 | 4.0 | 5.0 | 6.5 | 5.0 | |
| 25 | 6.5 | 7.0 | 7.0 | 6.5 | 6.0 | 2 |
| 26 | 6.5 | 7.0 | 6.5 | 6.5 | 6.5 | |
| 27 | 7.0 | 7.0 | 6.5 | 6.5 | 6.5 | 2 |
| 28 | 7.0 | 7.0 | 6.5 | 6.5 | 8.0 | |
| 1 | 7.0 | 7.0 | 6.5 | 6.5 | 7.0 | 2 |
| Maximum | 350 | 350 | 350 | 350 | 350 | |
| Hibapontok | | | | | | |
| Végső pont | 236.5 | 232.5 | 219.5 | 216 | 240.5 | |
| Technikai % | 67.424% | 66.212% | 62.576% | 61.515% | 68.636% | |
| Összbenyomás % | 70.000% | 70.000% | 65.000% | 65.000% | 70.000% | |
| ÖSSZ % | 67.571% | 66.429% | 62.714% | 61.714% | 68.714% | |
| *SZPL % | - 0.000% | - 0.000% | - 0.000% | - 0.000% | - 0.000% | |
| ÖSSZ%-SZPL% | 67.571% | 66.429% | 62.714% | 61.714% | 68.714% | |
| VÉGEREDMÉNY % | | | | | 65.429% | |

E: Ilja VIETOR (SVK) H: Elizabeth MCMULLEN (CAN) C: Bernard MAUREL (FRA) M: Elisabeth MAX-THEURER (AUT) B: Leif TOERNBLAD (DEN)